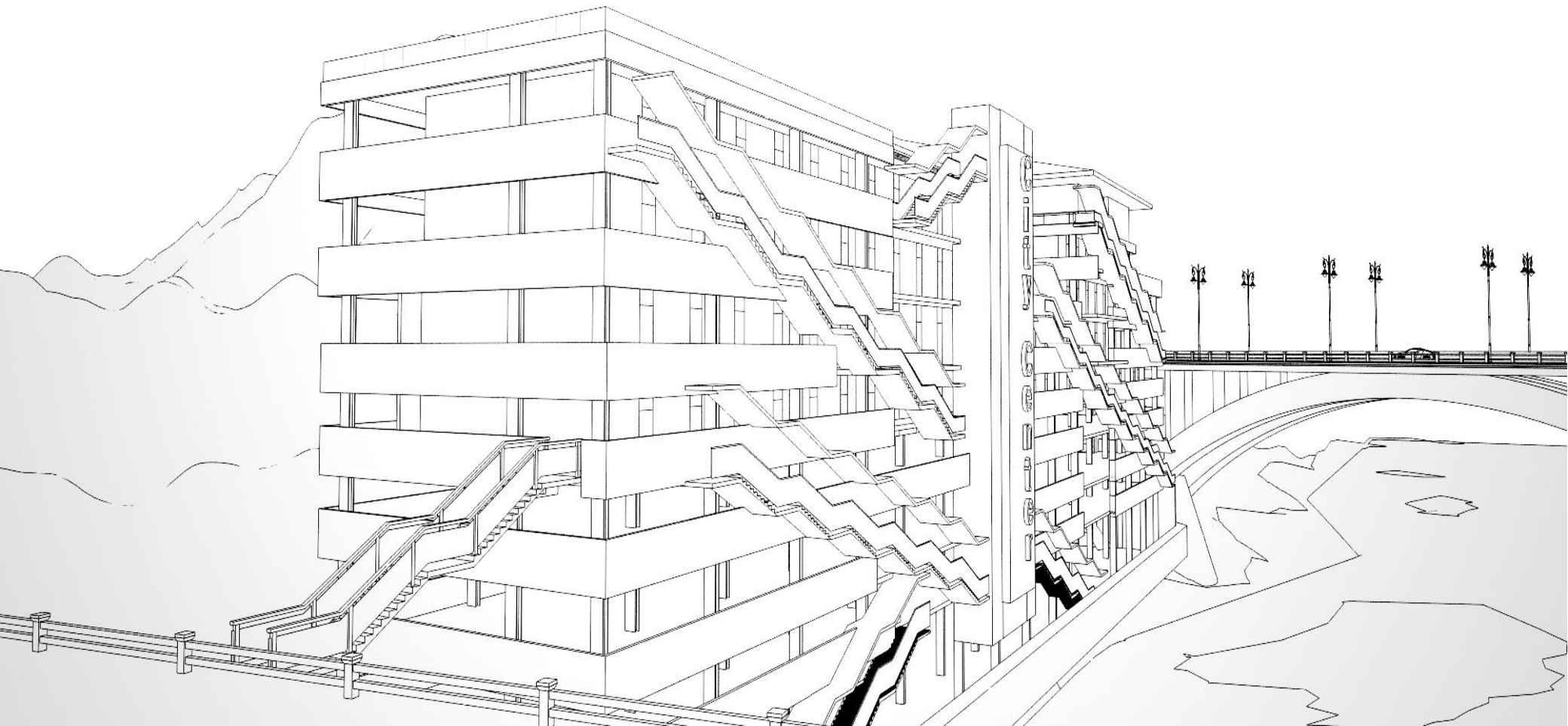


1ST MALL IN MANDI



Raheja City Centre. Parking cum Commercial Complex

JAINCHU KA NAUN, MANDI, H.P

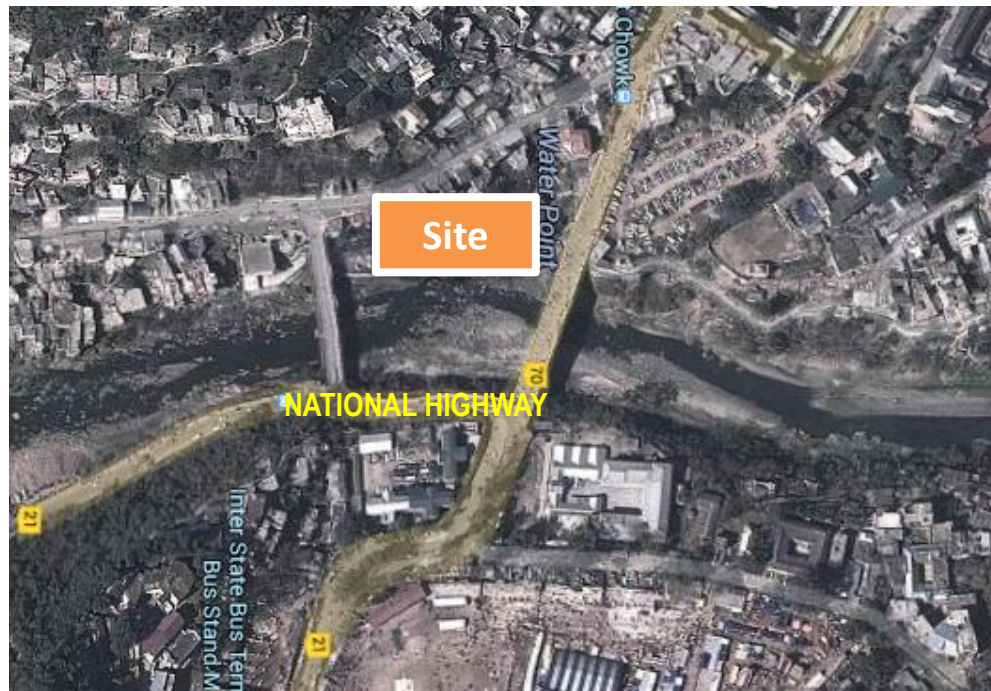


LOCATION

The Mall is strategically situated at the **ENTRY & EXIT** of Mandi town.

Fully visible from the **NATIONAL HIGHWAY**

It is at a **NOT TO BE MISSED** Location.



Latitude

31.706477

Longitude

76.934245

View from National Highway



NATIONAL HIGHWAY 21

Shopping

World class retail outlets

Designer & luxury stores

Banks & ATMs



Food Court & Entertainment

Multi Cuisine

Open terrace

Outdoor sit-outs



PARKING

250+ parking spaces

Easy accessibility



**Super Market
For
100,000+
Mandi
Residents**



**Cross Over For
3,00,000 +
Tourists**



**Open Terrace
Food Court**



**Residents &
Tourists
Traffic**

**20+
Professional
Colleges &
IIT Mandi**



**250+ Floor
Parking**



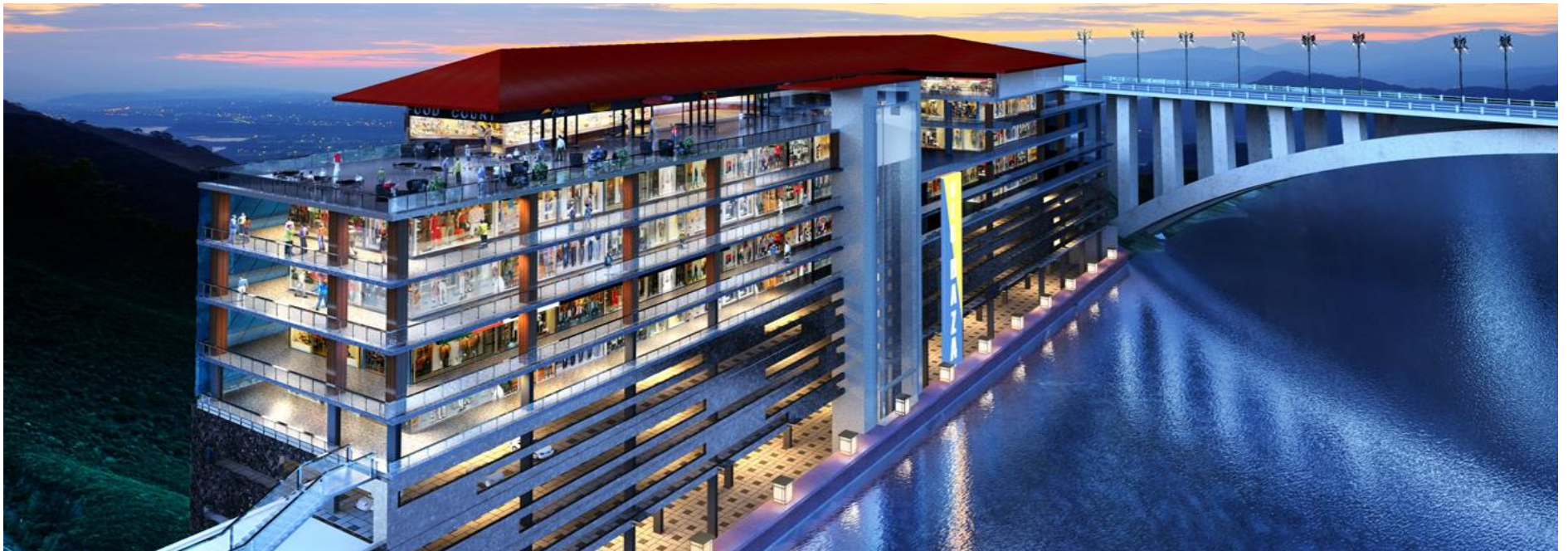
SURVEY

INDIRA MARKET

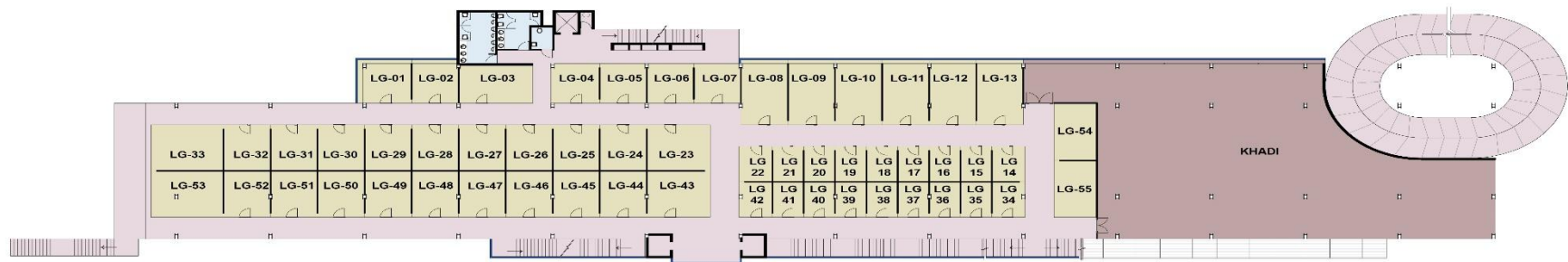
- **Just 70 Meters Away**
- **Rs.50-65 Lac for 8' x 18' size**
- **Rental Rs. 75-80 / sqft**

MALL BENEFITS

- **Best Location with visibility from NH**
- **Covered Parking**
- **Fire fighting**
- **Organized shopping**
- **Different Shop sizes**



Tentative Plan (lower Ground floor)



Tentative Plan (Upper Ground floor)



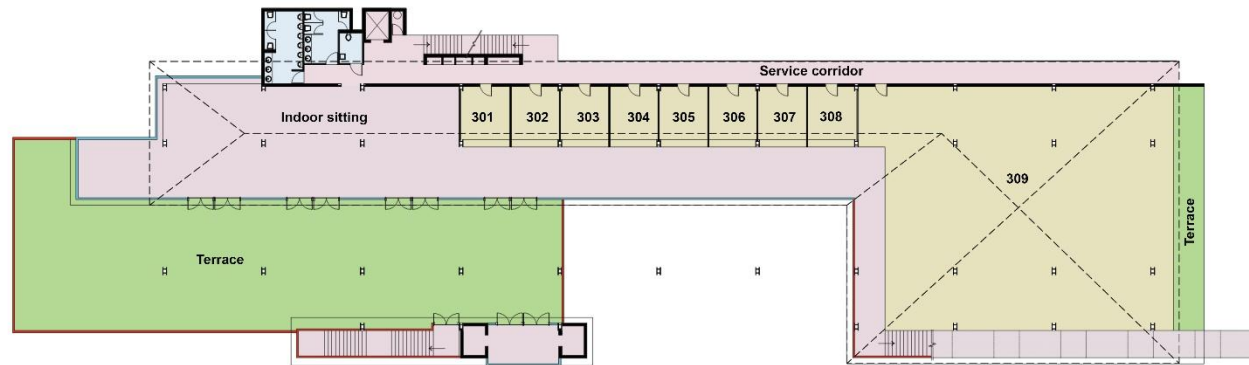
Tentative Plan (first floor)



Tentative Plan (Second floor)



Tentative Plan (Third floor)



CONTACT



RAHEJA MALL PVT LTD

WWW.RAHEJAINFRA.IN
MARKETING@RAHEJAINFRA.IN

SALES AND MARKETING OFFICE

**2012/1 WARD NO 3, JAIL ROAD, MANDI,
HIMACHAL PRADESH**